

PART OF N.W. 1/4, SEC. 33, T.7N., R.2W., S.L.B. & M.

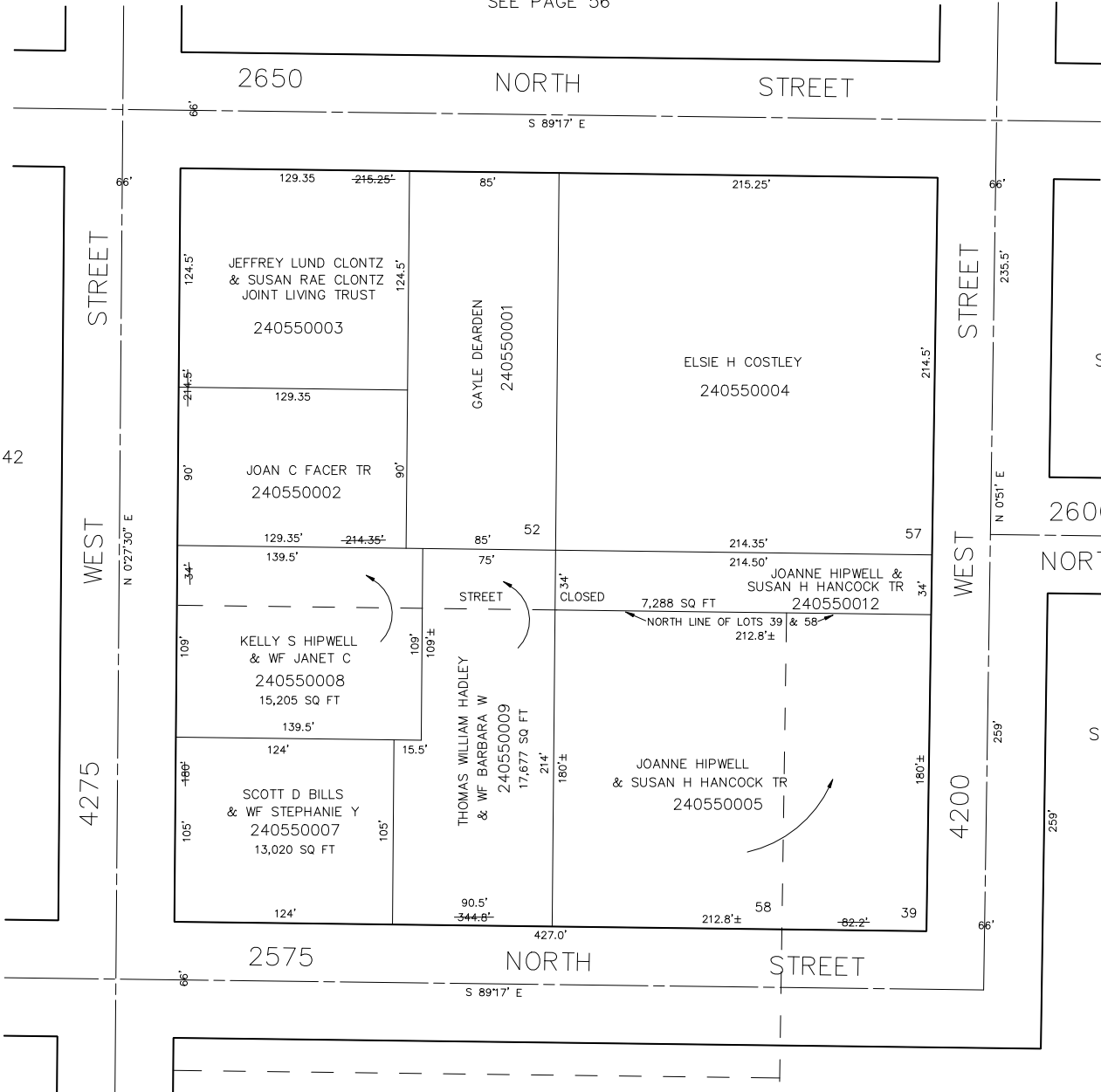
PLAIN CITY

PART OF LOTS 39 & 58, & ALL OF LOTS 52 & 57 PLAT B

TAXING UNIT: 21

SCALE 1" = 50'

SEE PAGE 56



SEE PAGE 54

2600 NORTH

SEE PAGE 50

SEE PAGE 50

SEE PAGE 51

SEE ORIGINAL DEDICATION
PLAT OF PLAIN CITY IN
BOOK 5, PAGE 80 OF RECORDS.